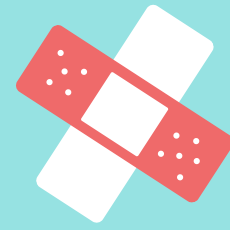
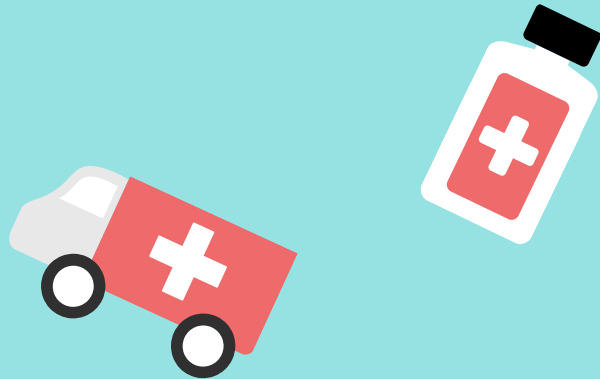


# THE EXAMINED INTERVIEW DAY

Benjamin Schnapp, MD, MEd & Sarah Fallon, BA



## DAY BEFORE INTERVIEW

- Social Event (Location, Food, Alcohol)
- Resident Involvement (Attendance, Recruitment Committee, Lodging)

## PEOPLE

- Chair and PD
- Faculty Interviewers
- Chiefs
- Residents
- Admin

## AFTER

- Swag
- Post-Interview/Post-Match Survey



## PRE-INTERVIEW PLANNING

- Scheduling Dates
- Budget
- Scheduling Software Choice
- Invitation Strategy
- Folders/Shared Documents
- Couples Coordination
- Internal Applicants/Rotators

## DAY OF INTERVIEW

- Length of Day
- Admin Support
- Branding
- Diversity

## STRUCTURE

- Conference Attendance
- Tour (ED, Hospital, City)
- Food (Breakfast, Lunch)
- Special Attributes (Research, Global Health, EMS)