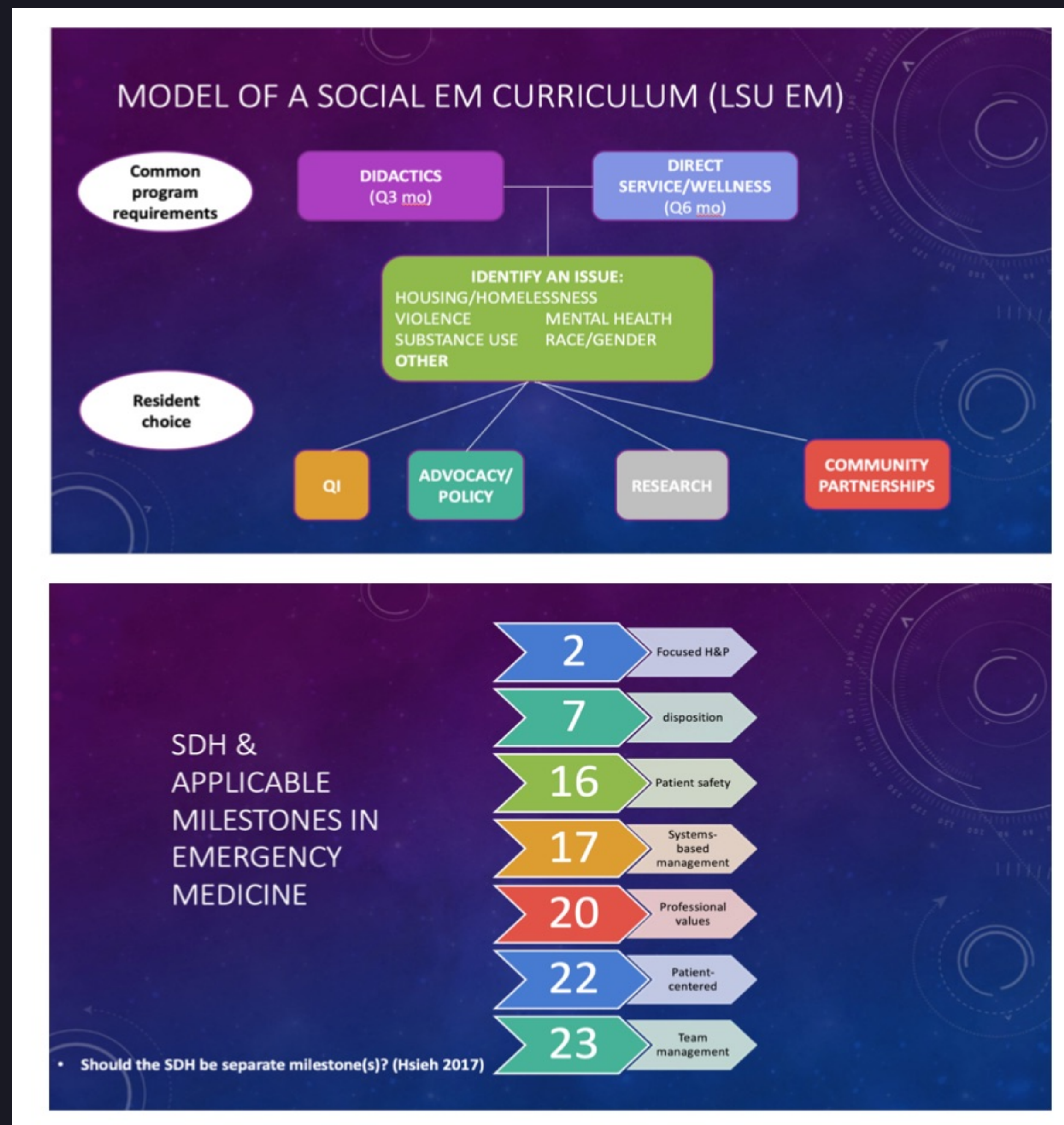


Building a Social EM Curriculum

Tips and Useful Resources

Dr. Avegno's model of Social EM at LSU and Suggested Milestones



On-line Resources

- **EMRA Guide on Fellowships (Social EM under Health Policy):**
<https://www.emra.org/books/fellowship-guide-book/11-health-policy/>
- **EMRA Social EM Fellowships:**
<https://www.emra.org/books/fellowship-guide-book/20-population-health-and-social-emergency-medicine/>
- **IdHEAL modules:**
<http://idheal-ucla.org/page-12/>
- **Poverty Sim Write Up:**
<https://onlinelibrary.wiley.com/doi/full/10.1002/aet2.10076>
- **Framework for Social Medicine:**
https://journals.lww.com/academicmedicine/Abstract/publishahead/Advancing_the_Biosocial_Perspective_in_the.97674.aspx

If you have any questions, please contact us:

Harrison Alter: doctordad@gmail.com
Dennis Hsieh: DHsieh@dhs.lacounty.gov
Callan Fockele: callan.fockele@gmail.com
Annie Chipman: chipma@uw.edu
Fiona Gallahue: fionagallahue@gmail.com

SAEM/ACEP/Stanford Social Emergency Medicine and Population Health

At Stanford, we are contributing to a website focused on Social Emergency Medicine and Population Health (SEMPH) created jointly by the ACEP and SAEM sections on SEMPH. The website hopes to foster collaboration and will have sections on Research, Innovations in SEMPH, and Educational Initiatives and Resources.

For the Education section of the website, we would like to highlight Social Emergency Medicine activities at residencies across the country, and would appreciate your input on the short survey below. Thank you!

<https://docs.google.com/forms/d/e/1FAIpQLSdkJ-fgpEi6FLlr2UgmVy83eDrMwTc32aTIM0JG9OGv26W3hQ/viewform>

*Ayesha Khan, MD, MPH
Center for Innovation in Global Health Fellow
Fellowship Director Social Emergency Medicine
Assistant Professor- Department of Emergency Medicine
Stanford University School of Medicine*